

Public Involvement Program

Number Three Wind Farm

Lewis County, New York

Case 16-F-0328

October 28, 2016

Revision 2

Prepared by:

Invenergy

One South Wacker Drive, Suite 1800

Chicago, Illinois 60606

Contact: Eric Miller

(301) 610-6413



Contents

1	Introduction	4
2	Applicant and Project Description	4
2.1	Company Profile	4
2.2	Project Summary	5
2.3	Project Area and Study Area.....	6
3	Public Involvement Program Overview.....	6
3.1	PIP Goals	6
3.2	PIP Schedule.....	6
3.3	Stakeholder Involvement.....	7
4	Stakeholders.....	7
4.1	Host Communities.....	8
4.2	County Agencies.....	8
4.3	State Agencies.....	8
4.4	Federal Agencies.....	8
4.5	Legislative Representatives	8
4.6	Highway Departments.....	8
4.7	Schools.....	9
4.8	Emergency Responders.....	9
4.9	Adjacent Municipalities	9
4.10	Utilities	9
4.11	Public Interest Groups	9
4.12	Airports and Heliports	9
4.13	Participating Landowners.....	9
4.14	Adjacent Landowners	10
4.15	Area Residents	10
5	Public Involvement Program Elements.....	10
5.1	PIP Activities, Schedule, and Goals	10
5.2	Communication Tools	11
5.3	PIP Materials	13
5.4	PIP Tracking Report.....	14
5.5	Comment Tracking.....	14
6	Environmental Justice Areas.....	14
7	Language Access	15

Figure

1. Regional Project Map with Project Area and Study Area

Appendices

- A. Stakeholder List
- B. Consultation Schedule
- C. Schedule and Goals for PIP Events
- D. PIP Tracking Report

1 Introduction

Number Three Wind LLC (NTW) plans to submit an application to construct a major electric generating facility under Article 10 of the Public Service Law (PSL). Pursuant to the rules of the New York State Board on Electric Generation Siting and the Environment (Siting Board), applicants proposing to submit an application to construct a major electric generating facility under Article 10 must submit a Public Involvement Program (PIP) Plan. The PIP must be submitted to the Department of Public Service (DPS) for review at least 150 days prior to filing a Preliminary Scoping Statement (PSS). This document is the PIP plan for the Number Three Wind Farm (the Project), a wind energy facility described in Section 2.

As required by 16 NYCRR § 1000.4, this PIP describes the steps NTW plans to take to inform, engage, and solicit input from the local community, general public, and other stakeholders.

2 Applicant and Project Description

2.1 Company Profile

Number Three Wind LLC is an affiliate of Invenergy Wind North America LLC (Invenergy). Invenergy is a utility-scale power producer developing, constructing, and operating renewable energy projects in the New York State energy market. Invenergy-owned energy projects operate under the supervision and regulatory authority of the New York State Public Service Commission (PSC) and the Federal Energy Regulatory Commission (FERC). Invenergy and NTW management offices are located in Chicago, Illinois.

Invenergy has developed over 60 wind farms in the United States, Canada, and Europe including the following three New York wind farms:

- High Sheldon Wind Farm, 75 turbines in the Town of Sheldon, Wyoming County, NY.
- Orangeville Wind Farm, 58 turbines in the Town of Orangeville, Wyoming County, NY.
- Marsh Hill Wind Farm, 10 turbines in the Town of Jasper, Steuben County, NY.

Invenergy also has developed and constructed six utility-scale solar projects in North America, totaling 144 MW installed to date, including one co-located at one of its wind farms. Invenergy is also developing the 25MW Tallgrass Solar facility in Suffolk County, NY.

Invenergy provides wholesale electricity to the public using clean, renewable sources such as wind and solar. This furthers the federal government's policy as articulated in 42 U.S.C. 9201 to "hasten the widespread utilization of [wind energy] systems," as well as the State of New York's renewable energy policy, which requires 50% of the State's energy to come from renewable sources such as wind by the year 2030.

NTW intends to construct, own, operate, and maintain all components of the Project, except for the interconnection switchyard which will be constructed by NTW, and then transferred to National Grid, who will own, operate, and maintain the switchyard.

2.2 Project Summary

Project Facilities

NTW is planning the Project to have a maximum generating capability of 105.8 megawatts (MW) from an estimated 35-50 wind turbines located on land leased from owners of private property located in the Towns of Harrisburg, and Lowville, in Lewis County, New York (Figure 1).

Project facilities will include commercial-scale wind turbines, access roads, buried and overhead electric collection lines, a Project substation, meteorological towers, an operation and maintenance (O&M) building, and electrical interconnection facilities. NTW anticipates the interconnection facilities will include an overhead 115-kV interconnection line approximately 4 miles long from a Project substation in the Project Area to a new 115-kV switchyard in the Town of Lowville, to be built adjacent to the existing Lowville-Bremen 115 kV line.

Energy Generation

NTW expects the Project will operate at an annual net capacity factor (NCF) of 32%. This means the Project, if built at the maximum expected generating capacity of 105.8 MW, would generate approximately 296,000 megawatt hours (MWh) of energy per year. This will be enough electricity to meet the average annual consumption of 27,000 or 41,000 households, based on average annual household electric consumption of 10.8 MWh for the U.S. and 7.2 MWh for New York State, respectively (EIA, 2014).

Economic Benefits

The Project would have positive socioeconomic impacts of permanent O&M jobs, temporary construction employment, lease payments to landowners, and a new source of revenue for schools, fire departments, county government, and town governments. National Renewable Energy Laboratory's (NREL) Jobs and Economic Development Impact (JEDI) model estimates Project construction will create approximately 50 jobs with a payroll of \$4.2 million. To operate and maintain the Project, NTW estimates it will hire approximately five full time employees to be located at the site. The construction jobs would last approximately one year, and the operations and maintenance jobs would last for the life of the Project.

The Project plans to enter into a PILOT agreement with the County Industrial Development Agency and it will be subject to special district taxes. Specific estimates of amounts the Project might pay to different jurisdictions will depend on the Project layout and structure of the agreements. Based on similar arrangements at other wind projects in New York, NTW estimates a 1205.8 MW project will generate approximately \$1,000,000 per year in taxes and tax-related payments to the county, towns, school districts, and fire departments that serve the parcels where NTW installs Project facilities.

2.3 Project Area and Study Area

Figure 1 shows the regional Project location, preliminary Project Area and preliminary Study Area for the Project. For purposes of this document, NTW defines these areas as follows:

- The Project Area bounds all tax parcels on which NTW expects to locate Project facilities. As shown in Figure 1, the Project Area is oblong, running from southeast to northwest, with Number Three Road bisecting it, County Route 26 forming the eastern boundary, and the Denmark town line as the northern boundary. It includes approximately 18,000 acres of land.
- The Study Area is all areas within 5 miles of the Project Area.
- A corner of Cobb Creek State Forest is included in the Project Area, but no project components will be located on state land.

3 Public Involvement Program Overview

3.1 PIP Goals

NTW developed this PIP to ensure comments of individuals and groups with a potential interest in the Project are objectively considered in the Project design and review. Specific PIP goals are to:

- Identify groups and individuals with a potential interest in the Project, i.e., “stakeholders;”
- Ensure stakeholders and the general public are aware of the Project;
- Ensure stakeholders can relatively conveniently access information on the Project and the Article 10 review process;
- Engage stakeholders to understand their interests related to the Project, so that NTW can work with them to address their concerns and take them into account as the project moves forward
- Gather specific information from stakeholders that can be used to design objective and useful studies to be defined in the Preliminary Scoping Statement and included in a complete application for the Project.

3.2 PIP Schedule

NTW began conducting PIP activities during the pre-application phase in April 2016, and it will continue until the Project begins commercial operation. Section 5 discusses specific PIP activities and their schedules.

3.3 Stakeholder Involvement

Stakeholder Notifications

NTW will notify stakeholders of the important Project milestones listed below. Stakeholder notifications will be by US Mail, except as discussed below for area residents and except for stakeholders that express a preference for email notification.

- Open Houses
- Preliminary Scoping Statement (PSS) Submittal
- Application Submittal
- Public Hearing
- Siting Board Decision
- Commencement of Construction
- Commercial Operations Date

Collection of Stakeholder Input

For stakeholder groups in sections 4.1-4.12 below, NTW will reach out to the point of contact to introduce the Project and offer to meet with the stakeholder group or point of contact. During stakeholder discussions NTW will introduce Invenegy, the Project, and the Article 10 review process, including Intervenor Funding. NTW will solicit specific feedback on issues that stakeholders want considered in the Project design or review. NTW will track this feedback in a comment log as discussed in Section 5.

Depending on the number of individual stakeholders, it may not be practical to contact each individually. As discussed in Section 5, NTW will develop materials, maintain a project website, and host events designed to inform landowners and residents. These materials, events, and the website will describe the Project and ways to submit input during the Article 10 review process.

Distribution of PSS and Application Documents to Stakeholders

NTW will notify stakeholders when the PSS and application are available on the Project website and at various document repositories. NTW does not intend to provide individual hard copies of these documents to Stakeholders except as required by 16 NYCRR §1000.5 and 16 NYCRR §1000.6.

4 Stakeholders

NTW has identified several categories of “stakeholders.” Overall, NTW relied on its experience developing other projects, review of PIPs filed for other projects, discussions with local officials, and the knowledge of its local representatives to identify potential stakeholders. Descriptions of stakeholder categories and the methods used to identify them follow. Appendix A contains the Project stakeholder list and the currently known contact information for each stakeholder. NTW will update the stakeholder list to add or remove stakeholders as it identifies new interested, or uninterested, parties during the course of PIP implementation.

Project outreach materials will contain instructions on how to be added to the stakeholder list. Individuals or organizations will be able to be added to the stakeholder list by calling a Project representative, calling a toll-free number, attending a public outreach event such as those for residents, or by sending an email to an address that will be posted on the Project website. Stakeholders can also be added to the list by US Mail, sent to the local project office located at 7586 S. State Street, Lowville, NY 13367.

4.1 Host Communities

Town boards and county boards representing any portion of the Project Area were identified by review of town and county boundary maps and are considered stakeholders. Points of contact will be the Town Supervisors and the County Administrator(s), and the town and county clerks. Notices will be addressed to the full board, care of the point of contact, with the expectation that the point of contact will distribute the notices and information to the full board. NTW will meet with the points of contact prior to submittal of the PSS and will offer to meet with the full boards.

4.2 County Agencies

County agencies, other than the county legislature, with areas of responsibility potentially affected by the Project were identified by review of the county website and consultation with the county planning department. Note that NTW has identified the County Emergency Response Coordinator and Sheriff as stakeholders and listed them under the category of “Emergency Responders.”

4.3 State Agencies

Departments of New York State government were identified in the Article 10 regulations, and by using NTW’s experience in developing wind projects in New York and by reviewing PIPs filed for other wind projects.

4.4 Federal Agencies

Agencies of the U.S. government were identified using NTW’s experience in developing wind projects in New York.

4.5 Legislative Representatives

Offices of the New York State Legislature, the U.S. Senate, and U.S. Congress representing the Study Area were identified by review of online district maps.

4.6 Highway Departments

County and town departments responsible for managing roads in the Study Area were identified by review of town and county boundary maps.

4.7 Schools

School districts serving parcels in the Study Area and school districts adjacent to these districts were identified by review of county tax maps.

4.8 Emergency Responders

Fire departments, emergency responders and police or sheriff departments serving parcels in the Study Area were identified by review of county tax maps.

4.9 Adjacent Municipalities

Towns, villages, or other municipalities that are not host communities but are in the Study Area were identified by review of municipal boundary maps.

4.10 Utilities

Companies that own gas, electric, or communications infrastructure in the Study Area were identified by consultation with the County Planning Department.

4.11 Public Interest Groups

Organizations that serve interests of the public in the Study Area were identified from discussions with the County Planning Department and from the 2016 list of county officials that includes county and town historians. This category includes business organizations, county and town historians, conservation or environmental organizations, and organized groups focused on use of the Project Area for outdoor recreation.

4.12 Airports and Heliports

Organizations operating FAA-registered airfields within 12 miles of the Study Area were identified by searching the FAA's database on licensed airports and heliports. The nearest public airport identified has a runway that is 14 miles from the nearest part of the Study Area. This airport is included as a potential stakeholder. There is also a military airport at Fort Drum 8 miles from the Study Area.

4.13 Participating Landowners

Property owners that have entered into lease, easement, purchase option, or setback agreements with NTW that will allow construction of Project facilities on or near their property are considered "participating landowners."

Participating landowners are included in the stakeholder list as one group, but not individually. NTW's private contacts with these landowners contains provisions for NTW and landowners to work together on Project plans. These consultations are private discussions outside the scope of this PIP. In addition to private communications with NTW via mail or email, participating landowners living in the Project Area will be notified of Project milestones and events in the same manner as all residents of the Project Area.

4.14 Adjacent Landowners

Owners of property that with property within 2,500 feet of a wind turbine, or substation, or within 500 feet of other Project components (e.g., collection lines, met tower, O&M facility, etc.), and any additional landowners whose homes are within 5,000 feet of a turbine, but who are not participating landowners, are considered “adjacent landowners.” When a Project layout is developed, NTW will identify these owners by review of tax records and will add the adjacent owners individually to the stakeholder list. These owners will receive mailings notifying them of Project milestones and events. NTW developed a project layout during the summer of 2016, and shared it at outreach events with participating and adjacent landowners and DPS Staff.

4.15 Area Residents

Residents of the Study Area that are not participating landowners or adjacent owners are included in the stakeholder list as one group. NTW plans to notify these residents of the Project individually by widespread mailing announcing the open houses to all unique addresses in the property tax rolls for the Study Area, and sharing basic outreach materials such as factsheets. This mailing will also include instructions on how to register as a stakeholder, in case the residents cannot attend the open houses but wish to remain informed. At the open houses, attendees will be encouraged to join the stakeholder list if they wish to continue to receive notice of future Project milestones (e.g., availability of the PSS, public hearing, etc.). After the open houses, NTW does not plan broad mailings to area residents that do not register as stakeholders. These residents would still likely hear more of the Project through public outreach activities and notices in area newspapers.

5 Public Involvement Program Elements

5.1 PIP Activities, Schedule, and Goals

Appendix C lists the PIP activities NTW plans to conduct and the tentative schedule and goals for each activity. In addition to the initial meetings, PIP activities will be conducted throughout the Article 10 process, including after the PSS and Application have been submitted.

Stakeholders Consultations

Stakeholder consultations will be arranged as described in Section 3. NTW anticipates almost all stakeholders will be interested in a meeting or conference call. For any such stakeholder meetings or conference calls, one or more of the representatives identified in Section 5.2 will represent NTW.

Topics covered during stakeholder consultations will vary depending on the stakeholder’s role and potential impact. Possible topics include payment in lieu of tax agreements, highway agreements, local laws, emergency response requirements, intervenor funds, and environmental impacts. Meetings will also specifically cover potential synergies or conflicts with stakeholder plans. Content of stakeholder consultation meetings will be documented in the PIP Tracking Report and comments received will be recorded as discussed in Section 5.5.

As appropriate, NTW will conduct subsequent meetings to answer specific questions, and to discuss studies, mitigation, or other strategies that could address stakeholder concerns.

Appendix B provides a tentative schedule of initial consultations.

Town Board Meetings

NTW presents at regularly-scheduled monthly board meetings of the local town and village boards in the Project Area. NTW will also request to present the project to the County Legislature at one of its regularly-scheduled meetings.

As part of the presentation given at each meeting, NTW introduces Invenergy, the Project, and the Article 10 process, including Intervenor Funding, and will respond to questions from the board and members of the public.

NTW representatives will be available to attend future town board meetings as requested by the boards.

The above meetings and any future presentations at town board meetings will be documented in the PIP tracking report.

Open House

NTW held two open house-style public meetings in August 2016 with representatives of NTW's development team participating in the meetings. The meetings featured poster displays on the Project, wind energy, and the Article 10 review process, including the process and availability of Intervenor Funding. Hand-outs and sign-up for stakeholder status were also presented. As part of the presentation, NTW emphasized the role of stakeholders and encourage interested area residents to join the stakeholder list.

The open houses were advertised at town board meetings, by mailings to stakeholders (including to all study area residents as described in Section 4.15), on the Project website, and in the newspapers listed in Section 5.2 with at least two weeks' advance notice.

As part of its mailing to stakeholders on the open house, NTW included instructions on how to contact NTW if a stakeholder is unable to attend an open house and would like to schedule a one-on-one meeting, a conference call, or attend another open house.

5.2 Communication Tools

Project Representatives

Invenergy has two representatives available to implement this PIP and answer questions from stakeholders:

Marguerite Wells
New York Developer
Invenergy LLC
mwells@invenergyllc.com
607-330-0399

Jon LaBarre
Local Representative
jonlab21@yahoo.com
(518) 420-4845

Contact information for local representatives are posted on the project-specific website. Additionally, this information will be made available at stakeholder consultations, town board meetings and open houses.

A local project office has been established at 7586 South State Street, Lowville, NY 13367. Hours are posted on the website, the office door, and also by appointment. The presence of the office and its hours have been publicized via local news outlets and in direct mailings to stakeholders.

Toll-Free Number

Invenergy also maintains a toll-free number (1-866-378-4580) connected to an automated voicemail that it will advertise on the Project website and monitor for questions on the Project. This line is not dedicated, so callers should identify the project they are calling about. Callers will receive responses within five days of leaving a message.

Website

NTW has established a user-friendly website dedicated to the Project and written in plain English. It is located at www.NumberThreeWind.com. NTW will update the website as the Project develops and more information becomes available. When available, the following items will be posted on the website:

- Project description and location;
- Project benefits and need;
- Project layout maps;
- Project milestones and timeline
- Project contact information, including an email address and a telephone number local to the Project Area;
- Summary of the Article 10 process;
- Summary of the intervenor funding process with instructions on how to apply;
- Addresses of local document repositories;
- Links to the Article 10 siting board webpage and to case-specific documents file for the Project;
- Notices for public outreach events, filings, and public hearings;
- PIP tracking report,
- Publications or educational materials presented at the open house(s) or distributed to stakeholders;
- Instructions on how to join the stakeholder list.

Document Repositories

NTW will maintain hard copies of the PIP, the PSS, and the application, plus any additional outreach or informational materials, at the following locations:

- Lowville Town Hall 5535 Bostwick St., Lowville, NY 13367
- Harrisburg Municipal Office, 7886 Cobb Rd, Copenhagen, NY 13626
- Lowville Free Library 5387 Dayan St, Lowville, NY 13367

Notifications to the General Public

NTW will publish notices as required by the Article 10 regulations. Notices of PSS and application filings will be published on the Project website and in the *Journal and Republican*, a paid-subscription, weekly newspaper based in Lowville, is the newspaper of record for host community towns. It has the largest circulation in Lewis County. <http://www.journalandrepublican.com/>

5.3 PIP Materials

For initial presentations given at town board meetings and at open house(s), NTW will use PowerPoint presentations to present information on NTW, the Project, and the Article 10 process, including Intervenor Funding. Presentations will contain maps, timelines, and other project-specific material developed by NTW.

PIP materials will cover some wind energy basics, but most residents are generally familiar with wind turbines, as the Maple Ridge Wind Farm, located within the Study Area was constructed ten years ago. NTW materials will be focused on unique aspects of NTW and the Project, the Article 10 review process, and how the wind technology used in the Project will compare to the turbines already in the area.

At the open house, NTW had poster board displays on topics such as:

- environmental, emissions offset, and fuel offset benefits of wind energy,
- expected changes in turbine dimensions and technology during the period when the Project will be in development,
- sound emission levels for a typical turbine model that might be used for the Project;
- Project schedule;
- economic benefits of the Project to the local economy;
- Project Area, Study Area, and proposed turbine layouts when available.

For meetings following the open house, NTW anticipates the items of most interest will be maps showing proposed locations of project facilities. NTW generated such maps in large format for display as part of its presentations after the open house.

NTW has developed materials on the above topics using information from its wind turbine suppliers, its knowledge of the Article 10 process; and industry sources such as the American Wind Energy Association. Versions of these materials are available on the Project website.

5.4 PIP Tracking Report

NTW will maintain a log documenting PIP activities, meetings, and consultations. For each event, the log will document the event date, location, attendees, summary of topics discussed, and any follow-up steps.

Every three months, NTW will file the PIP tracking report with the Secretary to the Commission and post it on the Project website.

5.5 Comment Tracking

NTW will maintain an internal log of comments or questions that are not simply answered or that may have interest to a broad audience. NTW will refer to this comment log in development of the PSS and application to ensure that comments are being adequately addressed.

6 Environmental Justice Areas

The New York State Department of Environmental Conservation (NYSDEC) provides map files of Potential Environmental Justice Areas it identifies as census block groups from the 2000 census with populations that meet one or more of the following thresholds:

- 51.1% or more of the population in an urban area reported themselves to be members of minority groups; or
- 33.8% or more of the population in a rural area reported themselves to be members of minority groups; or
- 23.59% or more of the population in an urban or rural area had household incomes below the federal poverty level.

No Potential Environmental Justice Areas are within the Project Area, but the following one is in the Study Area, in the Village of Lowville.

- Census Block Group ID: 360499503005 is located approximately 3 miles southeast of the Project Area. This area is in the towns of Lowville and Martinsburg. It's categorized as a rural area, and 2000 census statistics show 7.7% are minorities and 26% are below the federal poverty level.

Outside the Study Area, but within 10 miles of the Project Area, is the following Potential Environmental Justice Area:

- Census Block Group ID: 360450609005 is located approximately 7 miles north of the Project Area. This area is in the Town of Carthage. It's categorized as an urban area, and 2000 census statistics show 8.37% are minorities and 30.9% are below the federal poverty level.

- Census Block Group ID: 360450608006 is located approximately 10 miles north of the Project Area. This census block covers Fort Drum. It's categorized as a rural area, and 2000 census statistics show 49.3% are minorities.

7 Language Access

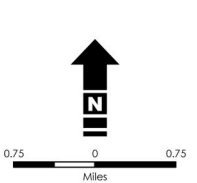
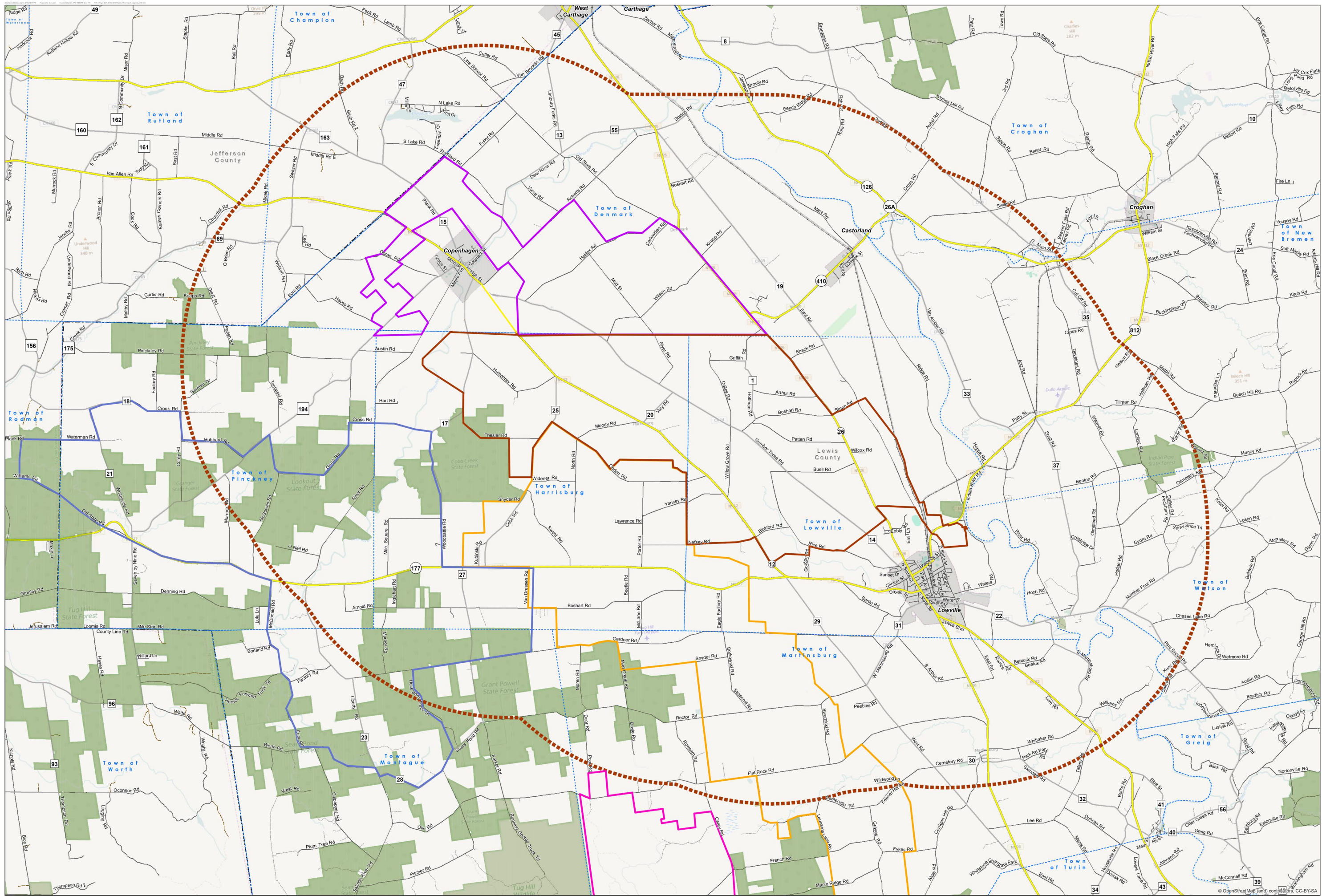
Article 10 regulations require the PIP to identify any language other than English spoken (1) by 5,000 or more persons, according to United States Census data, residing in any 5-digit zip code postal zone in which any portion of such zone is located within the Study Area; and (2) by a significant population of persons residing in close proximity to the proposed facility, alternative locations, or interconnections.

Table 1 lists the 5-digit zip codes extending into the Study Area and the most prevalent non-English languages spoken. As shown by Table 1, there are no zip codes touched by the Study Area where 5,000 or more people do not speak English. The Spanish-speaking numbers are included in the Non-English totals, and are a sub-set thereof.

Table 1. Number of Residents of Study Area Zip Codes by Primary Language Spoken at Home

Zip Code	Post Office Name	English	Non-English	Spanish
13367	Lowville	7672	404	129
13404	Martinsburg	199	22	0
13619	Carthage	9367	390	146
13626	Copenhagen	2015	23	18
13620	Castorland	1915	50	4
	Total	21,168	889	297

Source: 2010 US Census, American Fact Finder, accessed 4/26/16



Legend

- Project Area
 - Study Area
 - Deer River Project
 - Roaring Brook Wind Project
 - Maple Ridge Wind Project
 - Copenhagen Wind Project
 - DEC Lands
 - Municipal Area
- Road Classification**
- US/State Route
 - US County Road
 - Local Road
 - Dirt/Unpaved Road
 - Railroad
 - Town/TNO Boundary
 - County Boundary
 - State/Province

Number Three Wind Farm

Lewis County, New York



Rev. 03
July 11, 2016

One South Wacker Drive Suite 1800
Chicago, Illinois 60606
(312) 224-1400

Appendix A.
**Number Three Wind Farm Public Involvement
Stakeholder List**

Host Communities	
Town of Harrisburg Steve Bernat, Supervisor Lisa Sawdey, Town Clerk 3620 O'Brien Rd Lowville, NY 13367	Town of Harrisburg Code Enforcement Don Mallette, Code Enforcement Officer Court House Lowville, NY 13367
Town of Lowville Randall Schell, Supervisor Gail Klosner, Town Clerk 5533 Bostwick St Lowville, NY 13367	Town of Lowville Code Enforcement Joseph Pfeiffer, Code Enforcement Officer 5533 Bostwick St. Lowville, NY 13367
County Agencies	
Lewis County Manager Liz Swearingin, County Manager 7660 North State Street Lowville, NY 13367	Lewis County Planning Department Frank Pace, Director of Planning 7660 N. State Street Lowville, NY 13367
Lewis County Industrial Development Agency Eric Virkler, Executive Director Po Box 106 7642 N. State St Lowville, NY 13367	Lewis County Soil & Water Conservation District Nichelle Billhardt, District Manager 5274 Outer Stowe Street, Suite #1 Lowville, NY 13367
Adjacent Municipalities	
Jefferson County Robert Hagemann, County Administrator Historic Courthouse, 195 Arsenal Street, 2nd Fl. Watertown, NY 13601	Town of New Bremen Peter Keys, Supervisor Elizabeth Jones, Town Clerk 8420 State Rt 812 Lowville, NY 13367
Town of Martinsburg Terrence Thisse, Supervisor Mary Kelley, Town Clerk PO Box 36 Martinsburg, NY 13404	Town of Pinckney Sherry Harmych, Supervisor Megan Vincent-Olmstead 587 County Route 194 Copenhagen, NY 13626
Town of Montague Scott Shattuck, Supervisor Barbara Loomis, Town Clerk 6353 Salmon River Rd. Montague, NY 13367	Town of Watson Virgil Taylor, Supervisor Christina Merry, Town Clerk 7316 Number Four Road Lowville, NY 13367
Village of Copenhagen cott Alexander, Mayor Sue Parker, Village Clerk PO Box 237 Copenhagen, NY 13626	Village of Lowville Donna Smith, Mayor Pamela Roes, Village Clerk 5535 Bostwick St Lowville, NY 13367
Town of Denmark Thomas Fleming, Supervisor Prudence Kunert, Town Clerk 3707 Roberts Rd Carthage, NY 13619	

Schools	
Lowville Academy and School District Cheryl Steckly, Superintendent 7668 State St Lowville, NY 13367	Copenhagen School District Scott Connell, Superintendent 3020 Mechanic St, PO Box 30 Copenhagen, NY 13626
Schools (adjacent)	
Beaver River School District Todd Green, Superintendent 9508 Artz Road Beaver Falls, NY 13305	Carthage Central School District Peter J Turner, Superintendent 25059 Woolworth St Carthage, NY 13619
Airports	
Duflo Airport Rt 3 box 92 Lowville, NY 13367	Watertown International Airport Grant Sussey, Manager 22529 NY-12F Dexter, NY 13634
Wheeler-Sack Army Airfield Director of Operations 10012 S. Riva Ridge Loop Fort Drum, NY 13602	
Emergency Responders	
Lewis County Fire and Emergency Management Robert Mackenzie, Public Safety Building 5252 Outer Stowe St Lowville, NY 13367	Lowville Fire Department Matthew Burriss, Fire Chief 5420 Parkway Dr. Lowville, NY 13367
Copenhagen Volunteer Fire Department NY-12 Copenhagen, NY 13626	Martinsburg Fire Department 5609 Whittaker Rd. Martinsburg, NY 13404
NYS Police Troop D RR 1, Route 26 Lowville, NY 13367	Lewis County Sheriff's Department Michael Carpinelli, Sheriff Outer Stowe Street Lowville, NY 13367
Emergency Responders (adjacent)	
Town of Watertown Fire Department Station 2 Ralph Green, Jr, Chief 25239 Route 67 Watertown, NY 13601	Castorland Fire Department Gary Ashline, Chief 5187 NY-410 Castorland, NY 13620
Carthage Fire Department Sean McHale, Fire Chief 685 S. James Street Carthage, NY 13619	Jefferson County Office of Fire and Emergency Management Joseph Plummer, Director 753 Waterman Dr Watertown, NY 13601
Federal Agencies	
US Fish and Wildlife Service Tim Sullivan 3817 Luker Road Cortland, NY 13045	US Army Corps of Engineers Buffalo District 1776 Niagara St. Buffalo, NY 14207
National Telecommunications and Information Administration Karl B. Nebbia, Associate Administrator, Office of Spectrum Management 1401 Constitution Avenue, N.W.	US Department of Defense Siting Clearinghouse Steve Sample, Mission Evaluation Branch 3400 Defense Pentagon, Room 5C646 Washington, DC 10301

Washington, DC 20230	
US Federal Aviation Administration Carmine Gallo, Eastern Region Administrator 1 Aviation Plaza Jamaica, NY 11434	
Highway Departments	
Lewis County Highway Department David Becker, Superintendent S. State St. Lowville, NY 13367	Town of Harrisburg Highway Department Terry Snyder, Superintendent 7886 Cobb Rd. Copenhagen, NY 13626
Town of Lowville Department of Public Works Mark Tabolt, Highway Superintendent 5481 Bostwick St Lowville, NY 13367	
Highway Departments (Adjacent)	
Jefferson County Highway Department James Lawrence, Superintendent 21897 County Rt 190 Watertown, NY 13601	Town of Martinsburg Highway Department Tyler Jones, Superintendent PO Box 13 Martinsburg, NY 13404
Village of Copenhagen Dept of Public Works Philipp Eggleston, Superintendent PO Box 237 Copenhagen, NY 13626	Town of New Bremen Highway Department Jonathan Bush, Superintendent 8420 NYS Rt 812 Lowville, NY 13367
Town of Montague Highway Department Clifford Young, Superintendent 6353 Salmon River Rd Lowville, NY 13367	Town of Watson Highway Department Robert Dosztan, Superintendent 6965 Number 4 Rd Lowville, NY 13367
Town of Pinckney Highway Department Don Cook, Superintendent 587 County Route 194 Copenhagen, NY 13626	Town of Denmark Highway Department Patrick Mahar, Superintendent 3709 Roberrts Rd Carthage, NY 13619
Village of Lowville Department of Public Works Tom Compo, Highway Superintendent 5481 Bostwick St Lowville, NY 13367	
Legislative Representatives	
Lewis County Legislature Michael Tabolt, Chair of legislators 7660 North State Street Lowville, NY 13367	Lewis County Legislator Dist 3 Craig Brennan, Legislator 7660 North State Street Lowville, NY 13367
Lewis County Legislator Dist 7 Greg Kulzer, Legislator 7660 North State Street Lowville, NY 13367	Lewis County Legislator Dist 8 Lawrence Dolhof, Legislator 7660 North State Street Lowville, NY 13367
NYS Assembly, 117th District Ken Blankenbush, Assembly Member 40 Franklin Street Suite 2 Carthage, NY 13619	NYS Senate 47th District Joseph Griffo, Senator 207 Genesee Street Room 408 Utica, NY 13501
US House of Representatives 21st District Elise Stefanik, Representative 88 Public Square, Suite A	US Senate, State of New York Charles E. Schumer, Senator, Leo O'Brien Building

Watertown, NY 13601	11A Clinton Ave, Room 420 Albany, NY 12207
US Senate, State of New York Kirsten E. Gillibrand, Senator, Leo O'Brien Building 11A Clinton Ave, Room 821 Albany, NY 12207	
Public Interest Groups	
Lewis County Chamber of Commerce Anne Merrill, Director 1291 Faichney Drive, Suite 1 Watertown, NY 13601	Tug Hill Tomorrow Land Trust Linda Garrett, Executive Director 1 Thompson Park Watertown, NY 13601
North Country Regional Economic Development Council Tony Collins, Co-Chair Dulles State Office Building Watertown, NY 13601	Development Authority of the North Country James Wright, Executive Director 317 Washington Street Watertown, NY 13601
NYS Tug Hill Commission Katie Malinowski, Executive Director 317 Washington Street Watertown, NY 13601	Cooperative Tug Hill Council Angie Kimball, CTHC Coordinator PO Box 34 Redfield, NY 13437
Northern NY Audubon Society P.O.Box 1172 Saranac Lake, NY 12983	Ruffed Grouse Society, North Coutry Chapter Corey J Bowen 655 Best Rd Moirra, NY 12957-2721
Lowville Free Library 5387 Dayan St Lowville, NY 13367	
Public Interest Groups (Hunting and Fishing)	
Lewis County Association of Sportsmen's Clubs Karen Turck, President 3394 Elm Street Port Leyden, NY 13433	Trout Unlimited, Tug Hill/Black River Chapter Paul Miller, President PO Box 437 Beaver Falls, NY 13305
Lowville Fish and Game Club Fay Fuerch, President 7954 Number Four Road, Lowville, NY 13367	Northern NY Hound Club David Simmons, President Hayes Rd Copenhagen, NY 13626
Stilwater #4 Fish and Game Club Patricia Sweet, President 5590 River St Lowville, NY 13367	
Public Interest Groups (Snowmobile Clubs)	
Black River Riders Donald Hamilton, President P.O. Box 691 Carthage, NY 13619	Lewis County Area Snowmobile Association Scott Matthews, President RR 1 Box 258 Spencer Rd Boonville, NY 13309
Barnes Corners SnoPals Janice Hodkinson, President Rt 1 Box 120T	Missing Link Snowmobile Club Richard Lajoie, President PO Box 844

Copenhagen, NY 13626	Carthage, NY 13619
Valley Snow Travelers Martin Beyer, President Rt.1 Box 14M Lowville, NY 13367	United Trails Gordon Yancey, President Flat Rock Inn, PO Box 22 Flat Rock Rd. Lowville, NY 13367
Public Interest Groups - Historians	
Lewis County Historical Society Marian Opela, President 7552 South State Street Lowville, NY 13367	Town of Lowville Historian Charlotte Beagle, 7468 Railroad St Lowville, NY 13367
Town of Harrisburg Historian Judith Scoville, Town Historian 7886 Cobb Rd Copenhagen, NY 13626	
State Agencies and Authorities	
NYS Department of Environmental Conservation, Region 6 Office Fred Munk, Natural Resource Manager 317 Washington st. Watertown, NY 13601	NYS Department of Environmental Conservation Basil Segos, Acting Commissioner Chris Hogan, Chief, Major Project Management Unit, Division of Environmental Permits 625 Broadway, 4th Floor Albany, NY 12233
NYS Office of Parks, Recreation and Historic Preservation Mark Spaulding, Asst Director, Thousand Island Region PO Box 247, 45165 NYS Route 12 Alexandria Bay, NY 13607	NYS Office of Parks, Recreation and Historic Preservation John Bonafide, Director, Technical Preservation Bureau PO Box 189 Waterford, NY 12188
NYS Department of Public Service Hon. Kathleen Burgess, Secretary Andy Davis, Utility Supervisor Office of Energy Efficiency and the Environment 3 Empire Plaza Albany, NY 12233	NYS Department of Agriculture and Markets Richard Ball, Commissioner 10B Airline Drive Albany, NY 12235
NYS Division of Homeland Security and Emergency Services John P. Melville, Commissioner 1220 Washington Avenue, State Office Campus, Building 7A Suite 710 Albany, NY 12242	NYS Department of Health Howard Zucker, Commissioner Corning Tower, Empire State Plaza, Room 1619 Albany, NY 12237
Empire State Development Corporation Howard Zemsky, President and CEO 625 Broadway Albany, New York 12245	Empire State Development Corporation Steve Hunt, Director Dulles State Office Building Watertown, NY 13601
NYS Department of Transportation Steven G. Kokkoris, P.E., Regional Director Region 7 (North Country) 317 Washington Street Watertown, NY 13601	NYS Department of Transportation Matthew Driscoll, Commissioner 50 Wolf Road Albany, NY 12232
NYSERDA John Rhodes, President and CEO 17 Columbia Circle Albany, NY 12203	New York Independent System Operator Jessica Gamache, Interconnection Process Coordinator 10 Krey Blvd. Rensselaer, NY 12144

NYS Office of General Services RoAnn Destito, Commissioner 41st Floor, Corning Tower Empire State Plaza Albany, NY 12242	NYS Office of Parks, Recreation and Historic Preservation Rose Harvey, Commissioner PO Box 189 Waterford, NY 12188
NYS Department of State Cesar A. Perales, Secretary One Commerce Plaza, 99 Washington Avenue Albany, NY 12231	
Utilities	
National Grid Michael Pilawa, Lead Technical Consultant 221 Old Campion Rd New Hartford, NY 13413	Frontier Communications (telephone) Main St. Red Creek, NY 13143
Ridgeview Communications (internet) P O Box 220 Clayton, NY 13624	Time Warner Cable (cable TV) 340 Eern Blvd Watertown, NY 13601
Maple Ridge Wind Farm 6972 Eagle Factory Rd Lowville, NY 13367	Deer River Wind Farm Jenny Briot, Senior Business Developer Atlantic Wind, LLC 2 Radnor Corp. Ctr., Ste. 200 100 Matsonford Road Radnor, PA 19087
Copenhagen Wind Farm James Damon, Development Manager EDF Renewables 45 Main Street, Suite 536 Brooklyn, NY 11201	

Appendix B

Number Three PIP

Stakeholder Consultation Schedule

Name	Target Date for Initial Contact	Status
Village of Lowville		Initial meeting held
Lewis County Planning Department		Initial meeting held
Lewis County Industrial Development Agency		Initial meeting held
NYS Police Troop D		Initial meeting held
Lewis County Sheriff's Department		Initial meeting held
Town of Lowville		Initial meeting held
Town of Lowville Town Clerk		Initial meeting held
Town of Denmark		Initial meeting held
Town of Denmark Code Enforcement		Initial meeting held
Town of Denmark Town Clerk		Initial meeting held
Town of Harrisburg		Initial meeting held
Town of Harrisburg Code Enforcement		Initial meeting held
Lewis County Manager		Initial meeting held
Lewis County Chamber of Commerce		Initial meeting held
NYS Department of Transportation (regional)		Initial meeting held
Watertown International Airport		Initial meeting held
Lewis County Fire and Emergency Management		Initial meeting held
NYS Department of Public Service		Initial meeting held
NYS Assembly, 117th District		Initial meeting held
Lewis County Historical Society		Initial meeting held
Lewis County Association of Sportsmen's Clubs		Initial meeting held
NYISO		Initial meeting held

National Grid		Initial meeting held
NYS Department of Environmental Conservation		Initial meeting held
NYS Department of Environmental Conservation, Region 6 Office		Initial meeting held
Town of Montague Highway Department (adjacent)		Call and follow-up letter
Town of New Bremen Highway Department (adjacent)		Call and follow-up letter
Town of Pinckney Highway Department (adjacent)		Call and follow-up letter
Town of Watson Highway Department (adjacent)		Call and follow-up letter
Town of Lowville Code Enforcement		Initial meeting held
Lewis County Legislator Dist 3		Initial meeting held
NYS Senate 47th District		Initial meeting held
US House of Representatives 21st District		Initial meeting held
Town of Lowville Code Enforcement		Initial meeting held
Town of Harrisburg Historian		Initial meeting held
Town of Lowville Historian		Initial meeting held
Northern NY Audubon Society		Call and follow-up letter
Ruffed Grouse Society, North Country Chapter		Call and follow-up letter
Lowville Academy and School District		Initial meeting held
Copenhagen School District		Initial meeting held
NYS Tug Hill Commission		Initial meeting held
Cooperative Tug Hill Council		Initial meeting held
NYS Office of Parks, Recreation and Historic Preservation		Initial meeting held
NYS Office of Parks, Recreation and Historic Preservation (regional)		Initial meeting held
Empire State Development Corporation		Initial meeting held

NYS Department of Health		Initial meeting held
Jefferson County (adjacent)		Call and follow-up letter
Copenhagen Volunteer Fire Department		Call and follow-up letter
Town of Watertown Fire Department Station 2 (adjacent)		Call and follow-up letter
Castorland Fire Department (adjacent)		Call and follow-up letter
Carthage Fire Department (adjacent)		Call and follow-up letter
Jefferson County Office of Fire and Emergency Management (adjacent)		Call and follow-up letter
Northern NY Hound Club		Call and follow-up letter
Stilwater #4 Fish and Game Club		Call and follow-up letter
Trout Unlimited, Tug Hill/Black River Chapter		Call and follow-up letter
Black River Riders		Call and follow-up letter
Lewis County Area Snowmobile Association		Call and follow-up letter
Barnes Corners SnoPals		Call and follow-up letter
Missing Link Snowmobile Club		Call and follow-up letter
Valley Snow Travelers		Call and follow-up letter
United Trails		Call and follow-up letter
NYS Department of State		Initial meeting held
Frontier		Call and follow-up letter
Ridgeview Communications (Internet)		Call and follow-up letter

Time Warner Cable (cable TV)		Call and follow-up letter
Maple Ridge Wind Farm	12/1/16	
Copenhagen Wind Farm		Initial meeting held
Deer River Wind Farm		Initial meeting held
National Telecommunications and Information Administration	12/1/16	
US Department of Defense Siting Clearinghouse	12/1/16	
US Federal Aviation Administration	12/1/16	
Beaver River School District (adjacent)	12/1/16	
Carthage Central School District (adjacent)	12/1/16	
US Senate	12/1/16	
US Senate	12/1/16	
Lewis County Legislator Dist 5	12/1/16	
Lewis County Legislator Dist 6	12/1/16	
Lewis County Legislator Dist 7	12/1/16	
Lewis County Legislator Dist 8	12/1/16	

Appendix C

Number Three Wind Farm Public Involvement Program Schedule and Goals for PIP Events

Activity / Milestone	Schedule	Goals ⁱ	Notes
Stakeholder consultations	April-Dec 2016	Basic introduction. Identify points of contact for each stakeholder. Identify areas of interest in the project design and review process. Identify other stakeholders. Emphasize importance of reviewing the PSS and submitting comments within 21 days of its filing.	See PIP Section 5.1.1. Appendix B has target dates for each consultation.
Website	June-COD ⁱⁱ	Basic introduction. Facilitate notification of Project milestones and PIP activities. Facilitate submittals of comments and requests to be on the stakeholder list.	TBD
Town Board Meetings	July 2016	Basic introduction. Obtain copies of applicable town laws. Encourage and explain ways to be involved in the review process.	See PIP Section 5.1.2
Mailing	August 2016	Post card mailed to all stakeholders announcing open house and website.	
Newspaper Ads	August 2016	Announce open house and website.	
Open House(s)	August 2016	Basic introduction. Encourage community members to be involved with the review process.	
Newspaper Placement of PSS Summary	Week before PSS Filing	Inform general public of the Project, new information availability, and the timeline for commenting on the PSS.	Required by Section 16 NYCRR 1000.5(d)
Stakeholder Mailing	Week before PSS Filing	Inform stakeholders of the Project, new information availability, and the timeline for commenting on the PSS.	Required by Section 16 NYCRR 1000.5(d).
PSS Filing	Nov 9 2016		Target date
Newspaper Placement of Application Notice	3 days or more before application filing	Inform general public of the Project, new information availability, timeline of commenting on the application.	Required by Section 16 NYCRR 1000.7. Will include a project map.
Stakeholder Mailing	3 days or more before application filing	Inform stakeholders of the Project, new information availability, timeline of commenting on the application.	Required by Section 16 NYCRR 1000.7. Will include a project map.
Town Board Meetings	0-8 weeks after PSS Filing	Explain latest Project plans, including number of turbines proposed in each town. Explain next steps in Article 10 review process.	See PIP Section 5.1.2
Application Filing	Nov 2017		Target date
Stakeholder Mailing	2-4 weeks before hearing	Inform stakeholders of the public hearing time and place.	
Public Hearing	Early 2019		Estimated date
Permit Decision	Spring 2019		Estimated date
Stakeholder Mailing	~1 week after permit decision	Inform stakeholders of the permit decision.	
Stakeholder Mailing	~1 week before start of construction	Inform stakeholders of start of construction	
Participating landowner meeting	~1 week before start of construction	Introduce landowners to the construction team. Explain construction schedule and procedures.	

Start of Construction	Summer 2020		Estimated date
Town Board Meetings	As required during construction	Present Project construction status. Collect comments from town board.	
COD	Fall 2021		Estimated date
Stakeholder Mailing	~1 week after COD	Inform stakeholders of COD	

ⁱ Basic introduction includes an overview of the Project, Inverenergy, and the Article 10 review process, including instructions on how to obtain intervenor funding, to join the stakeholder list, and to submit comments to be included in the design and study of the Project.

ⁱⁱ COD = Commercial Operations Date